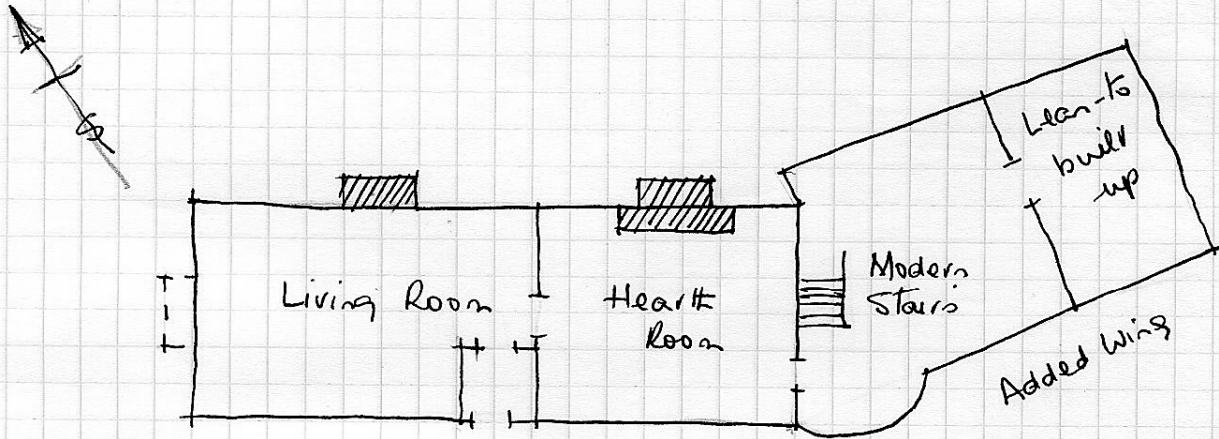


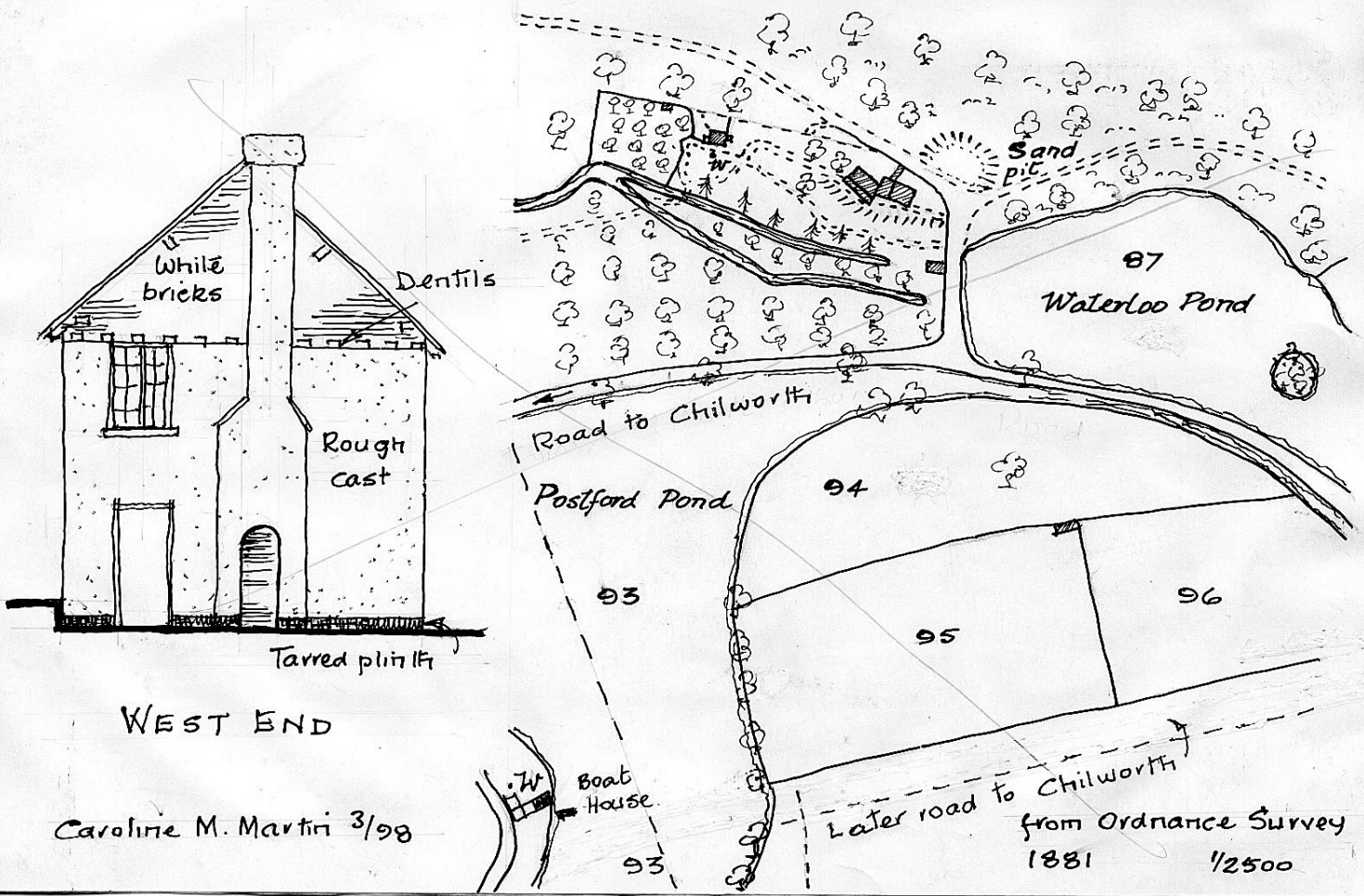
Summary by Caroline Martin - Albury History Society - alburyhistory.org.uk



An early 19C. house, with gabled tiled roof, open Gothic windows and a wing, possibly rebuilt.

Brick walls, roughcast to front & sides, brick dentils. Now gabled, possibly once hipped. Roof now all one build. Slight differences in first floor levels and window sizes might suggest different builds for Living Room and Hearth Room.

Wing may have been rebuilt - 1881 O.S. shows wing set back, divided in two. Was this the first house? It is built parallel to the slope of the hill. Curved "tower" displaces awkward join of the two builds.



WEST END

Caroline M. Martin 3/98

from Ordnance Survey 1881 1/2500